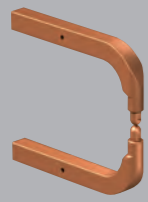
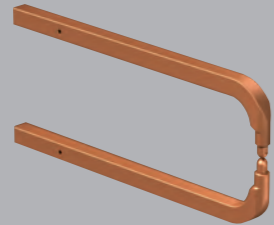


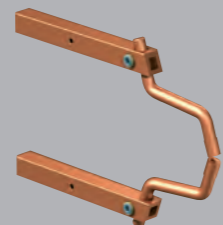
Welding arm set:



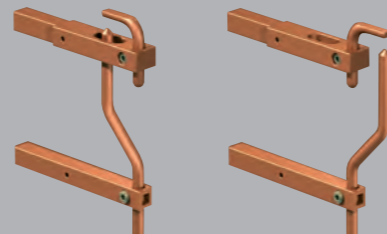
Celect III **0774-100**
L = 200 mm



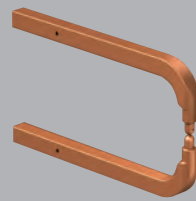
Celect III **0774-102**
L = 400 mm



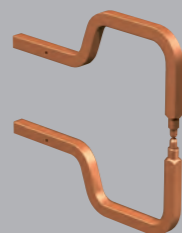
Celect III **0774-105**
L = 250 mm, with arched electrode



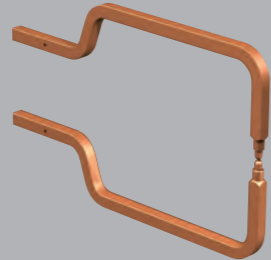
Celect III **0774-106/07**
wheel arch / roof



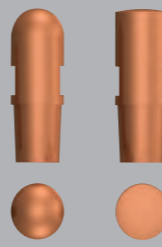
Celect III **0774-101**
L = 300 mm



Celect III **0774-103**
L = 350 mm



Celect III **0774-104**
L = 525 mm



Celect III **0774-141** **0774-143**
electrode caps

Technical data

	PROTON I	PROTON I+
Supply voltage	3 x 400 V	3 x 400 V
Frequency inverter	1,000 Hz (2,000 Hz)	1,000 Hz (2,000 Hz)
Max. welding current	9,000 A DC	12,000 A DC
Max. welding output	83 kVA	114 kVA
Dimensions l/w/h (without trolley)	690 / 290 / 475	690 / 290 / 475
Weight (without trolley)	58 kg	58 kg
Mains fuse protection	32 / 40 / 50 A	32 / 40 / 50 A
Welding current	9 kA	12 kA
Open circuit voltage	15 V	16 V
Insulation class	I.Cl.F	I.Cl.F
Protection class	IP 21	IP 21
Cooling	AF	AF

Spot welding tongs pneumatic, water cooled

	PROTON I	PROTON I+
	Celect II to 300 KN	Celect II to 300 KN
	Celect Easy to 350 KN	Celect Easy to 350 KN
	Celect III to 480 KN	Celect III to 480 KN
Welding cable / length	150 mm ² / 2.5 m (3.0 m)	150 mm ² / 2.5 m (3.0 m)
Operating pressure	6-10 bar	6-10 bar
Electrodes	10 / 12 / 14 mm	10 / 12 / 14 mm

Cable sets water cooled

	PROTON I	PROTON I+
Gun cable / length	150 mm ² / 2.30 m	150 mm ² / 2.30 m
	150 mm ² / 2.80 m	150 mm ² / 2.80 m
Earth cable / length	150 mm ² / 2.30 m	150 mm ² / 2.30 m
	150 mm ² / 2.80 m	150 mm ² / 2.80 m

Incl. in package

- Inverter spot welding machine
- Trolley
- Cable Holder
- Spot welding tongs: pneumatic, water cooled, optional: Celect III, Celect II or Celect Easy
- Gun cable 0601-721 / Earth cable 0601-62 2.30 m, water cooled
- Cooling system FK 4.000 R
- Pull-hammer
- Welding arm set incl. electrode caps, water cooled, consisting of art. no.: 0774-100, 0774-102, 0774-105, 0774-106/07

Servicebox

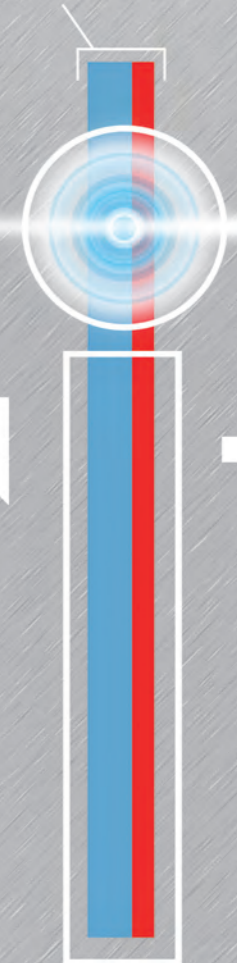
- Single-Side electrode
- Carbon shrinking electrode
- Shrinking electrode
- Pick-up electrode for washers
- studs
- T-pins



FAN AUSTRIA GMBH
Spot welding & auto-body-repair technologies
Buxbaumstraße 2, 4600 Wels
Tel. ++43 (7242) 444 32, Fax ++43 (7242) 694 38
office@fan-austria.com
www.fan-austria.com

Distributor:

MULTI GRADE STEELS
MULTIPHASENSTÄHLE



PROTON +



SPOT WELDING PERFECTED

PRECISE SPOT WELDING CONNECTIONS OF MULTI GRADE STEELS (DUAL / TRIP), MATERIALS OF DIFFERENT THERMAL CONDUCTIVITY AND GALVANIZED SHEETS.

FAN 36
months warranty


DEVELOPED, TESTED & EXAMINED FOR THE CAR INDUSTRY  BETTER COOLING: INCREASED WELDING POWER – PERFECTLY ENGINEERED AND UNSURPASSED: CONTROLLED WATER COOLING RIGHT TO THE TIP




PROTON I+ 12,000 A*
PROTON I 9,000 A*

RELIABLE PROCESS, TIME SAVING THROUGH THE SUPERIOR WATER COOLING CIRCLE MODULE. HIGH PERFORMANCE INVERTER, SELF EXPLANATORY AND CLEAR CONTROL PANEL WITH MEMORY KEY.

WORKSHOP FRIENDLY: ENCLOSED ERGONOMIC DESIGN, NO UNNECESSARY EXPOSED EQUIPMENT OR CABLES

 *)Actual, continuous power at the tip of the electrodes at constant load. Tested & confirmed in practice and endurance tests.

 **COOLING** of the individual components is of vital importance for productivity and the quality of the welding spot. The fully integrated cooling system, developed by FAN, guarantees the precise cooling of **THE WHOLE MACHINE RIGHT TO THE ELECTRODE CAPS**. This ensures the maximum quality of the welding spot and a long lifespan for the electrodes.

OVERHEATING IS IMPOSSIBLE

The clever water re-cooling system FK 4.000 R of the PROTON I / I+ manages constant temperatures and includes the welding cable, connections, rectifier, high performance transformer, tongs, impact point pack and earthing hose pack.

CONSISTENT AND SECURED WELDING PROCESS UNDER CONSTANT LOAD

Consistently high welding current power – guaranteed by the high performance inverter (as used in car assembly). No drop in performance! Buffer circuit compensation levels out drops in mains current immediately.

+++ Continuous acoustic and optical monitoring of the welding spot – sensitive to varnish residue, low electrode pressure or electrode contamination.

PROCESS RELIABILITY & TIME SAVING

Exact reproduction of any welding spot possible due to the built-in digital processor. The memory key recalls all preset parameters. Time and energy frequencies can be programmed according to set factory requirements. These frequencies can be preset exactly for any body and sheet strength.



NEW COMBINATIONS OF MATERIALS IN CAR ENGINEERING DETERMINE THE FUTURE OF AUTOBODY REPAIR SOLUTIONS.

"The welding spot must to be of the same quality as in the car production line." This binding criteria is the unique strength of the FAN **PROTON I / I+** Generation

PROTON I I+