

# PROTON AL

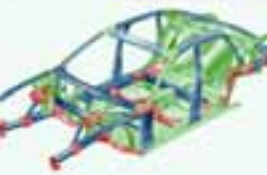
FAN PROTON AL  
MULTIWELDER



**FAN**<sup>®</sup>  
**AUSTRIA**

PERFECT SPOTWELDING





# THE ALL-ROUND MULTIWELDER

## GENERAL REMARKS

### SIMPLICITY ITSELF TO OPERATE, AND A HUGE RANGE OF USES:

With its new PROTON AL Multiwelder, FAN presents – today – the up-and-coming generation of machines for the autobody workshop of tomorrow. No matter whether you're welding aluminium, steel or galvanised sheet – you'll find no easier and more efficient way to do it than with the PROTON AL.

## WELDING PROPERTIES

### GREAT FEATURES – FOR GREAT WELDING.

A universal “all-rounder” of a welding machine, the PROTON AL boasts some truly winning features. To start with, the multifunctional welding torch has a dual-purpose inner liner enabling it to be used with both aluminium and steel wires. This practical innovation saves both time and money, as now there's no need to fiddle around changing the torch. No matter which process you use, the welding properties are superb, especially with light-gauge sheets. To ensure that you always have the optimum arc when welding, there are two inductor connections, covering different dynamic ranges.

Thanks to its large wheels and sturdy design, you can take the PROTON AL just about anywhere. It also has a detachable side panel to protect the drive system from abrasive dust. Yet another “plus” in terms of both safety and quality.

Universal torch



## HANDLING

### EXCEPTIONALLY EASY TO HANDLE.

Professional welding can be really easy: With the PROTON AL's colour-coded guidance system, anybody can be welding like an expert in next to no time! On the intuitively laid out display, you can see “what's what” straight away. Simply choose your colour and you'll always have the right settings, whether for aluminium or steel.



Clear and easy: The colour-coded guidance system for getting the right settings

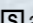

It goes without saying that the PROTON AL features constant, dependable wirefeed and continuously adjustable spotwelding and intermittent welding times. Not to mention the central torch-connector, which makes for exact linkage between current and gas.

And even extremely soft aluminium wires (AlSi12) can be welded without difficulty using the Proton AL. All you need here is a Push-Pull torch.

## SAFETY

### SAFETY WRIT LARGE.

Needless to say, every FAN machine meets all safety standards and has to pass stringent and exhaustive testing.

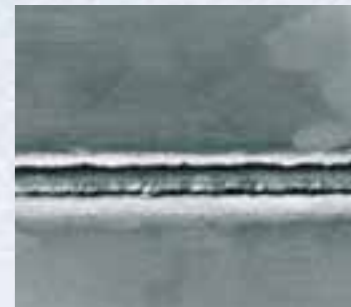
No surprise, then, that all FAN machines come with the  and  marks to EN 60 974/1 and EN 50 199.

## PRACTICAL EXAMPLES

No matter whether you're working with aluminium, galvanised or high-alloy steel – with the PROTON AL you can be sure of a perfect-quality seam every time.



Aluminium sheet



Aluminium weld pattern



Galvanised steel sheet, MIG-brazed



Front and back of MIG-brazed seam



Steel sheet, 2 x 1 mm



High-alloy CrNi steel sheet



## TECHNICAL DATA

Power source	PROTON AL	
Mains voltage	+/-15 %	3 x 230/400 V, 50/60 Hz
Mains fuse protection	3 x 400 V	16 A slow
	3 x 230 V	32 A slow
Cos phi	180 A	0.99
Efficiency	110 A	69 %
Primary continuous rating		3.1 kVA
Welding current range	Aluminium MIG/MAG	10 – 180 A
	Steel MIG/MAG SG2/CrNi	20 – 200 A (max. 240 A)
Welding current at 10 min / 40 °C	30 % d.c.	180 A
	60 % d.c.	130 A
	100 % d.c.	110 A
Open-circuit voltage		31 V
Operating voltage	MIG/MAG	10 – 23 V
Degree of protection		IP 21
Type of cooling		AF
Insulation class		F
Approval marks		S, CE
Number of switching steps		10
Dimensions L x W x H (power source)		750x380x650 mm
Weight (power source)		81 kg

Dealer:

## CHECKLIST

2-step and 4-step modes  
 Spotwelding and intermittent modes  
 Current-free feeder inching  
 Intermittent welding time adjustable 0.5 - 4 s  
 Spotwelding time adjustable 0.5 - 4 s  
 Burn-back time adjustable 0.01 – 0.1 s  
 Gas pre-flow time approx. 0.25 s  
 Gas post-flow time approx. 1 s  
 Overtemperature indicator  
 Euro central connector for torch  
 Automatic feeder-creep (power source)

## ARTICLE NUMBERS

0901 FAN PROTON AL, complete

### Spare parts

0901-01 Torch hosepack, complete  
 0901-02 Handle shells, left and right  
 0901-03 Handle shells, left and right, and pushbutton  
 0901-04 Earth cable with clamp  
 0901-041 Clamp  
 0901-05 Wire inner liner, universal  
 0901-06 Gas nozzle, conical  
 0901-07 Contact tube, 0.6 mm 10 pcs.  
 0901-08 Contact tube, 0.8 mm 10 pcs.  
 0901-09 Contact tube, 1.0 mm 10 pcs.  
 0901-10 Contact tip  
 0901-11 Insulating ring  
 0901-12 Aluminium wire reel, 1.0 mm  
 0901-13 MIG/MAG wire reel, 0.8 mm  
 0901-14 CuSi3 wire reel, 1.0 mm

### Accessories

0901-20 Push-Pull torch (AlSi12)  
 0901-21 "easy" weld shield  
 (Helmet-type welder's shield)



FAN AUSTRIA GMBH

Business Unit Spotwelding and Autobody Technologies

Buxbaumstrasse 2, A-4600 Wels, Tel: +43 7242 44 4 32, Fax: +43 7242 69 4 38

E-mail: office@fan-austria.com, www.fan-austria.com